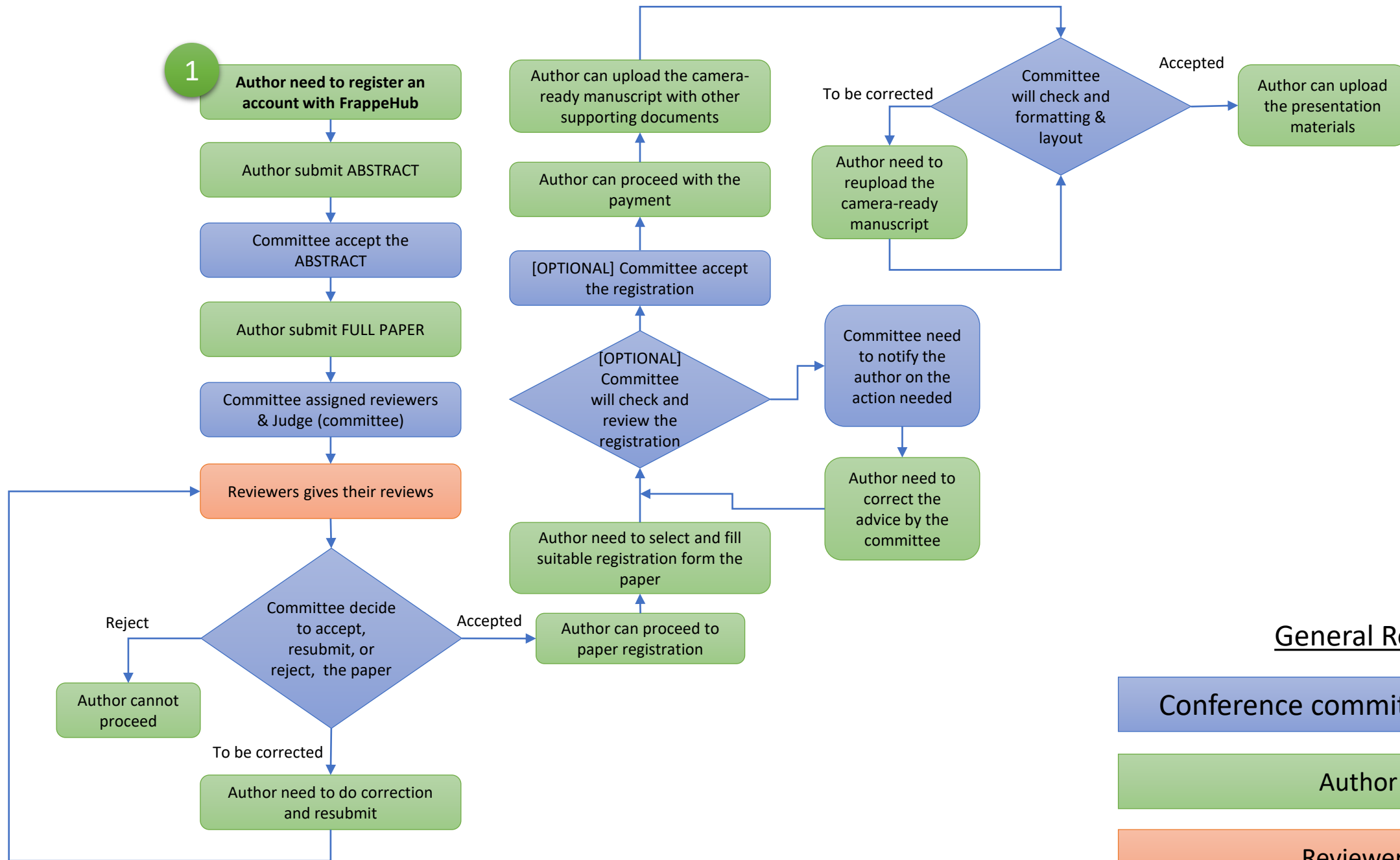




<https://conference.frappehub.com/>

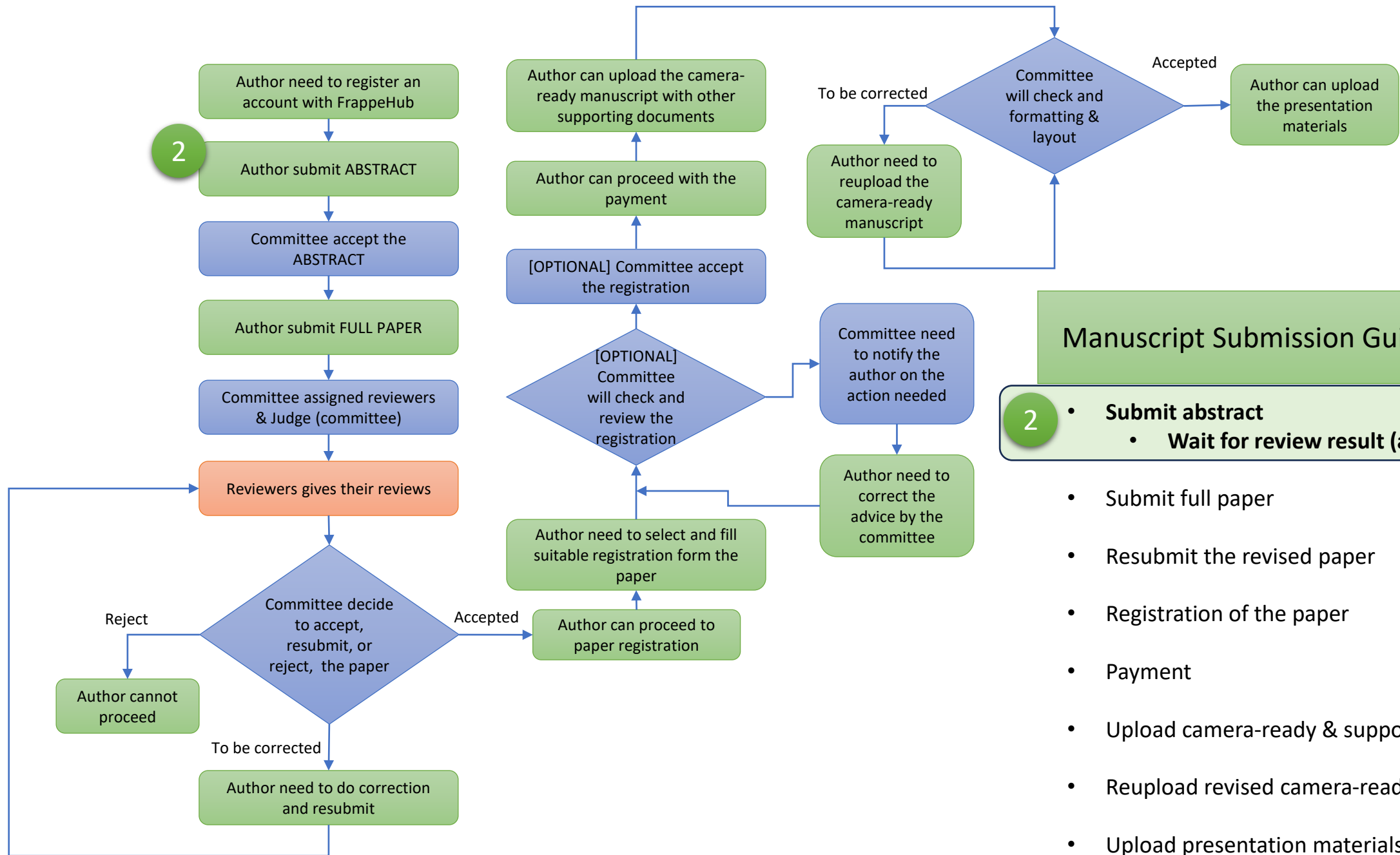


General Role

Conference committee (JUDGE)

Author

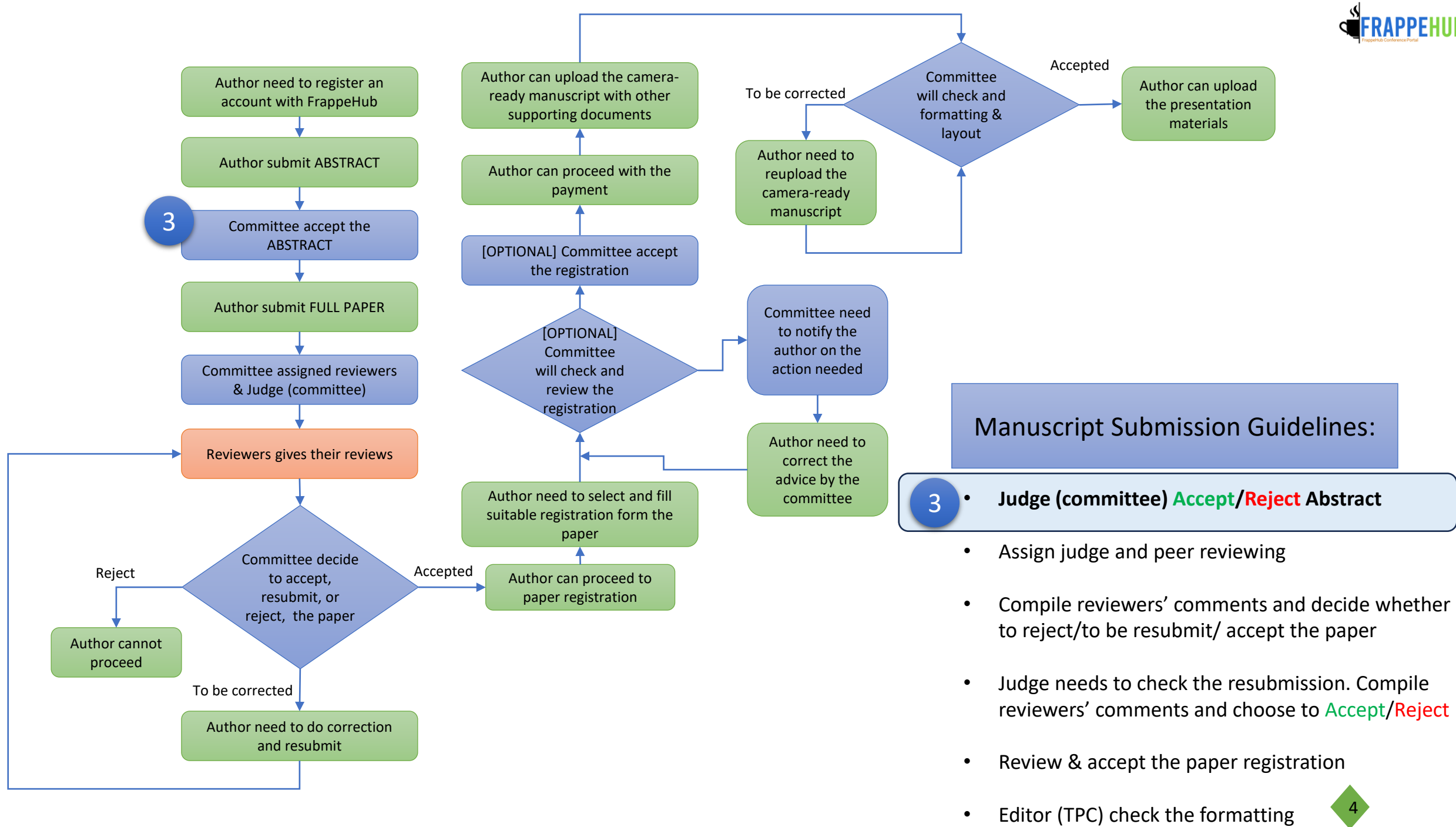
Reviewers

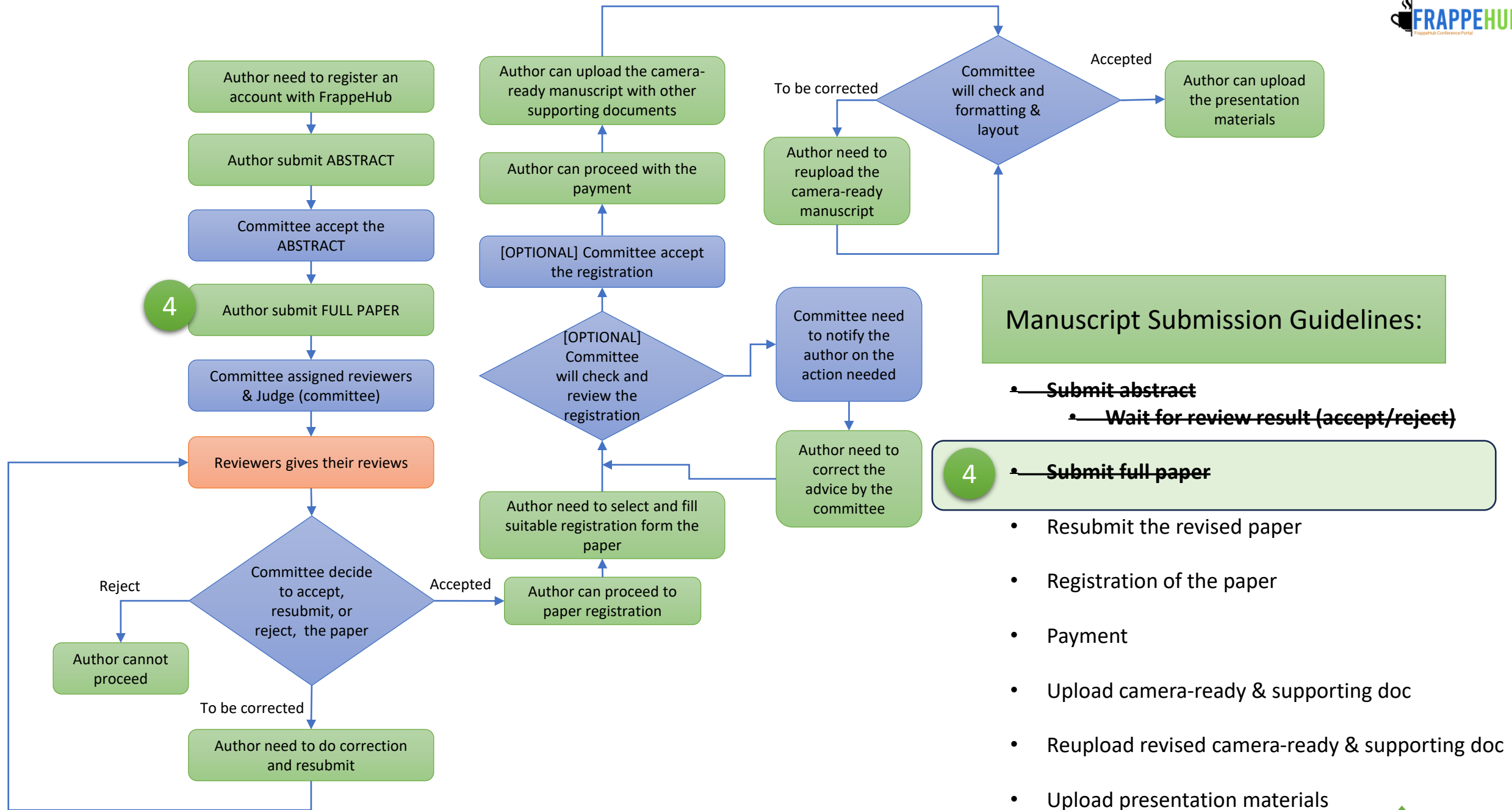


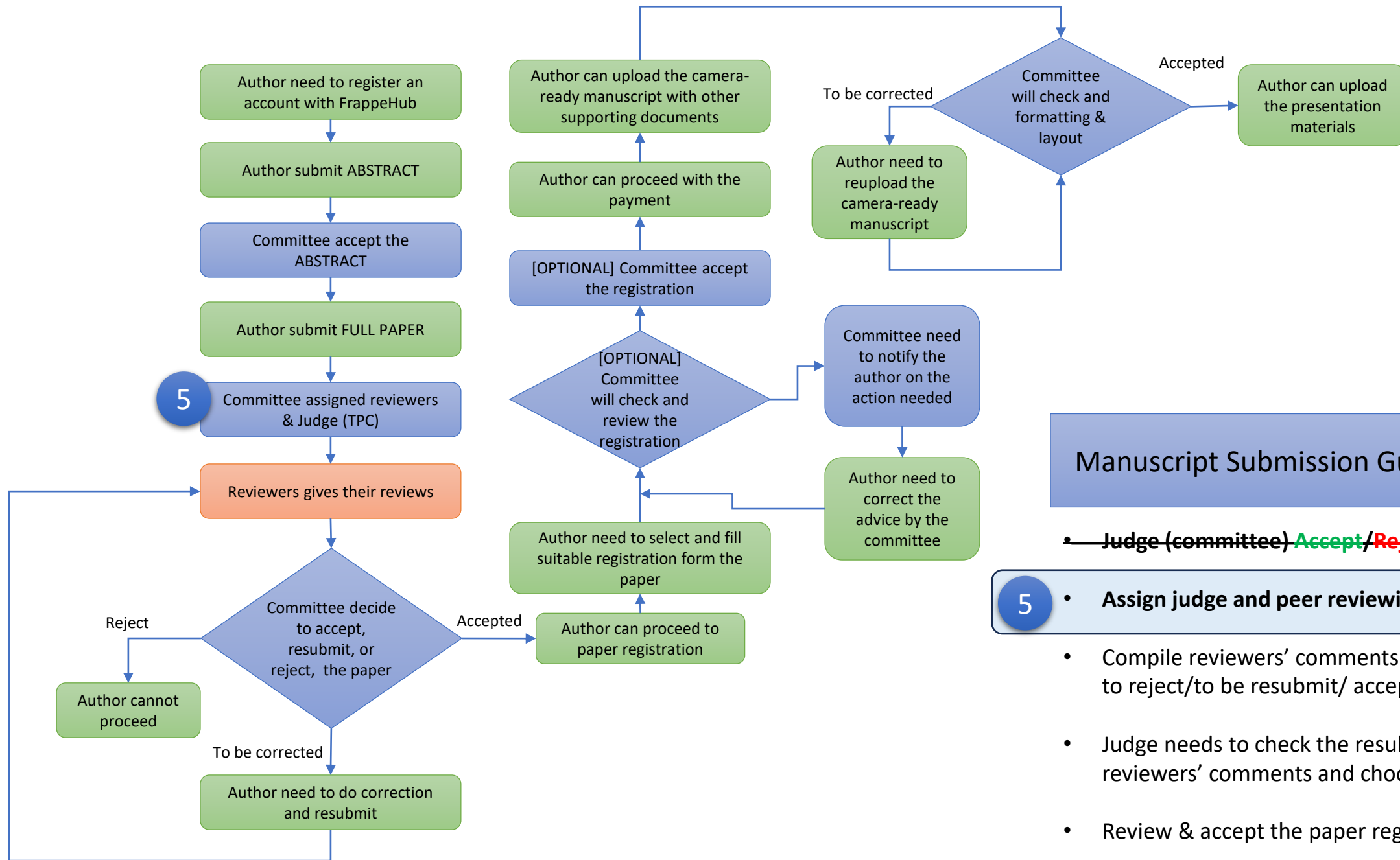
Manuscript Submission Guidelines:

2

- **Submit abstract**
 - **Wait for review result (accept/reject)**
- Submit full paper
- Resubmit the revised paper
- Registration of the paper
- Payment
- Upload camera-ready & supporting doc
- Reupload revised camera-ready & supporting doc
- Upload presentation materials







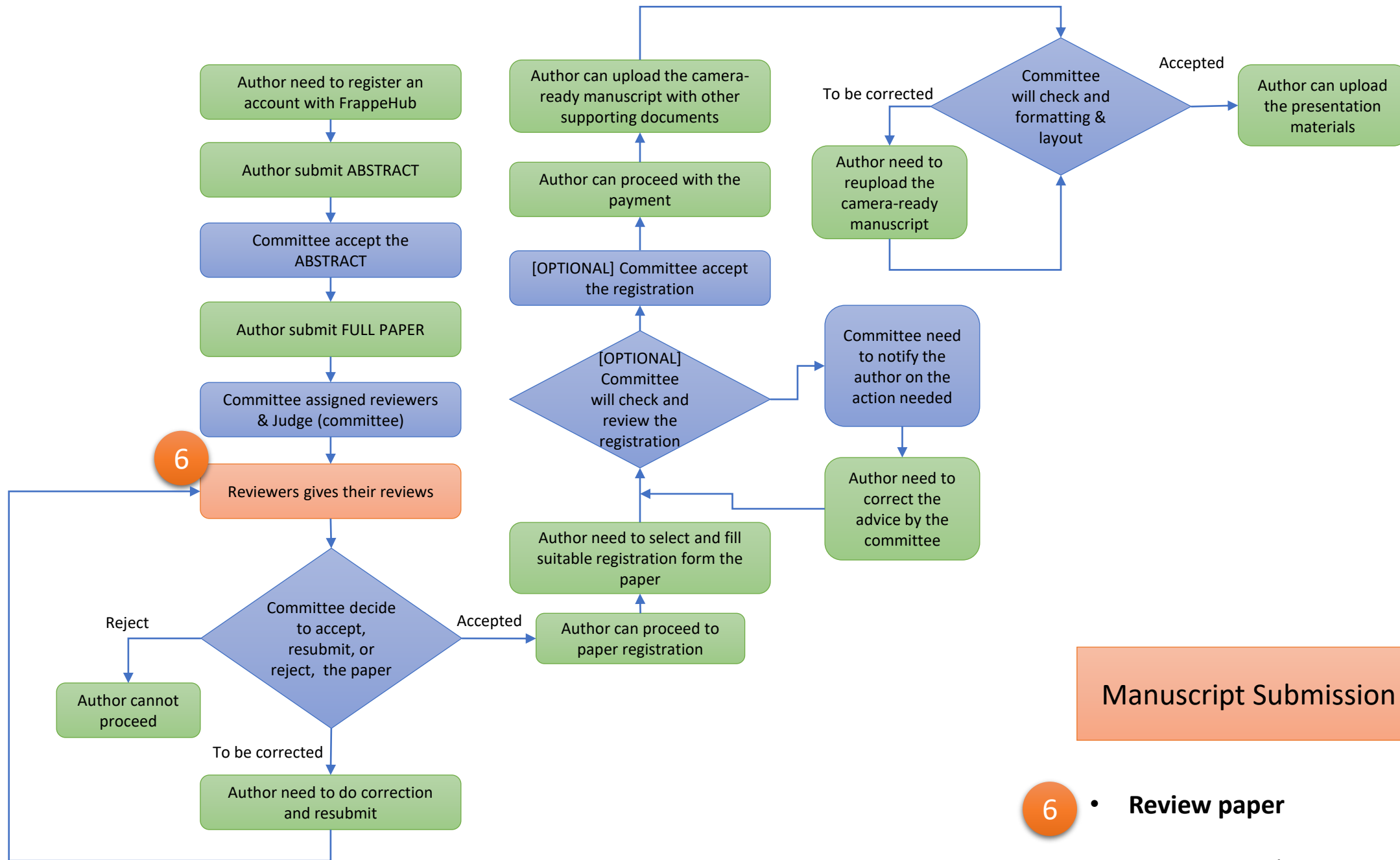
Manuscript Submission Guidelines:

• ~~Judge (committee)~~ **Accept/Reject Abstract**

5

Assign judge and peer reviewing

- Compile reviewers' comments and decide whether to reject/to be resubmit/ accept the paper
- Judge needs to check the resubmission. Compile reviewers' comments and choose to **Accept/Reject**
- Review & accept the paper registration
- Editor (TPC) check the formatting

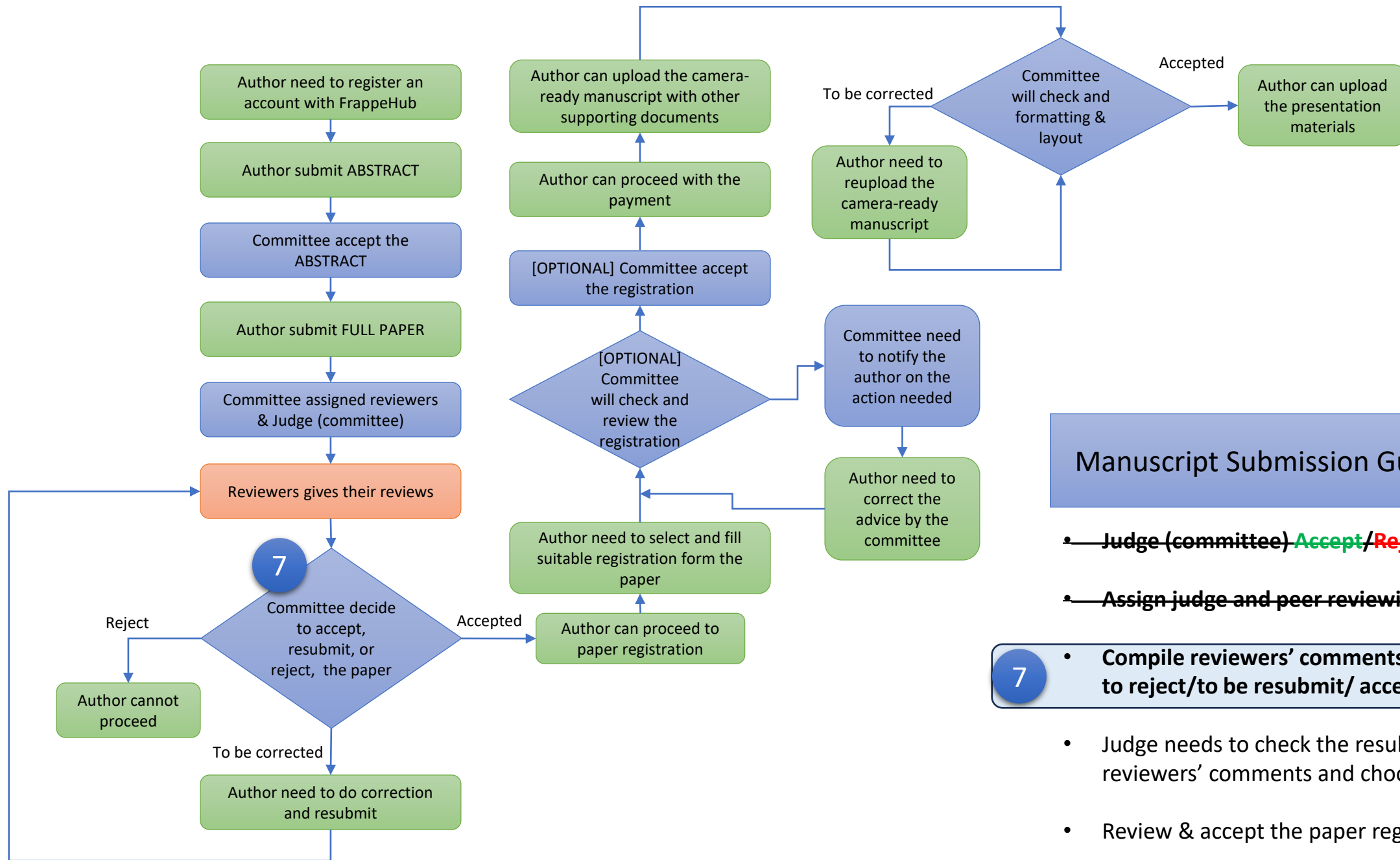


Manuscript Submission Guidelines:

6

• Review paper

(Accept/ to be corrected/ reject)



Manuscript Submission Guidelines:

• ~~Judge (committee)~~ **Accept/Reject Abstract**

• ~~Assign judge and peer reviewing~~

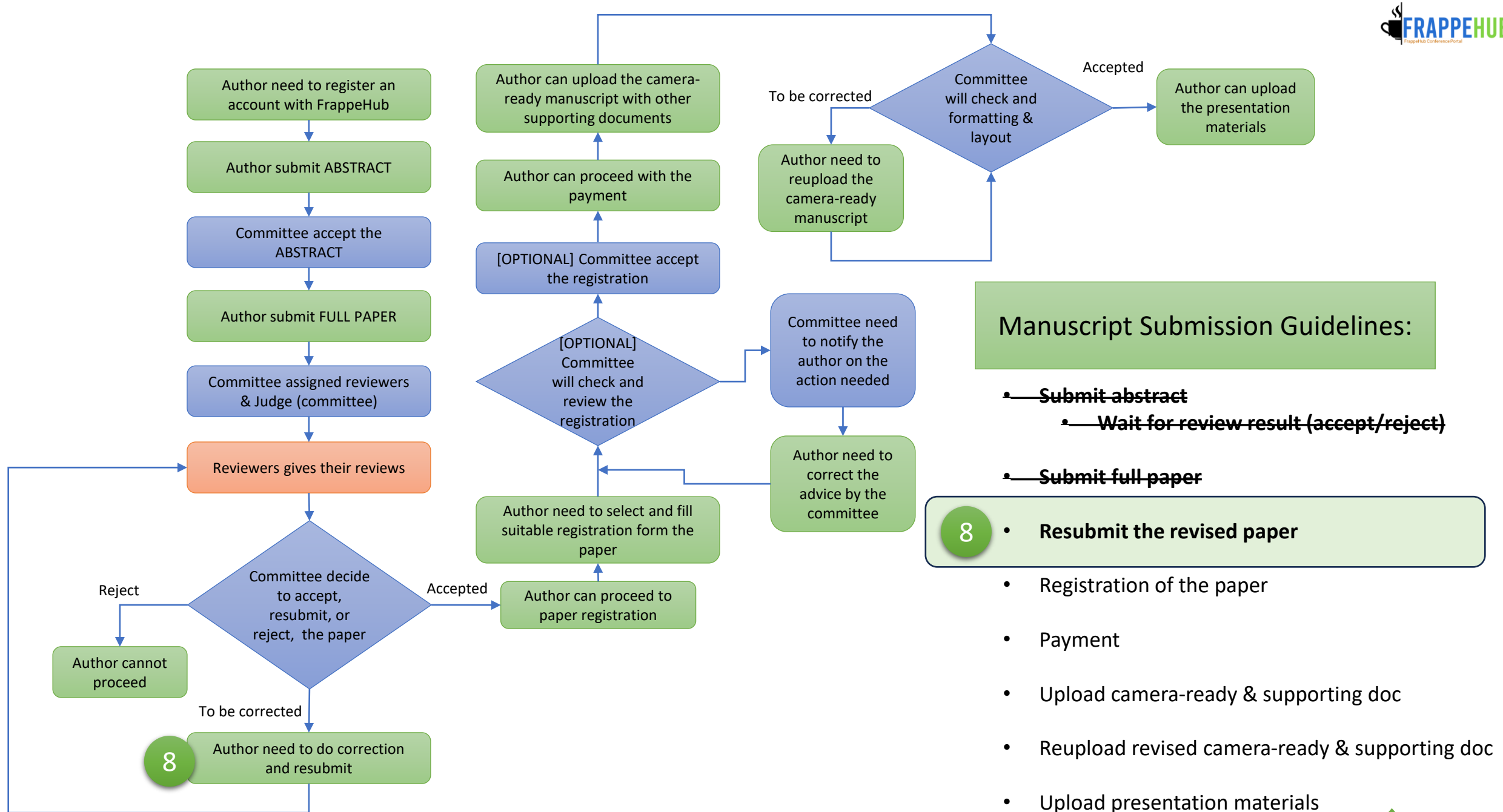
7

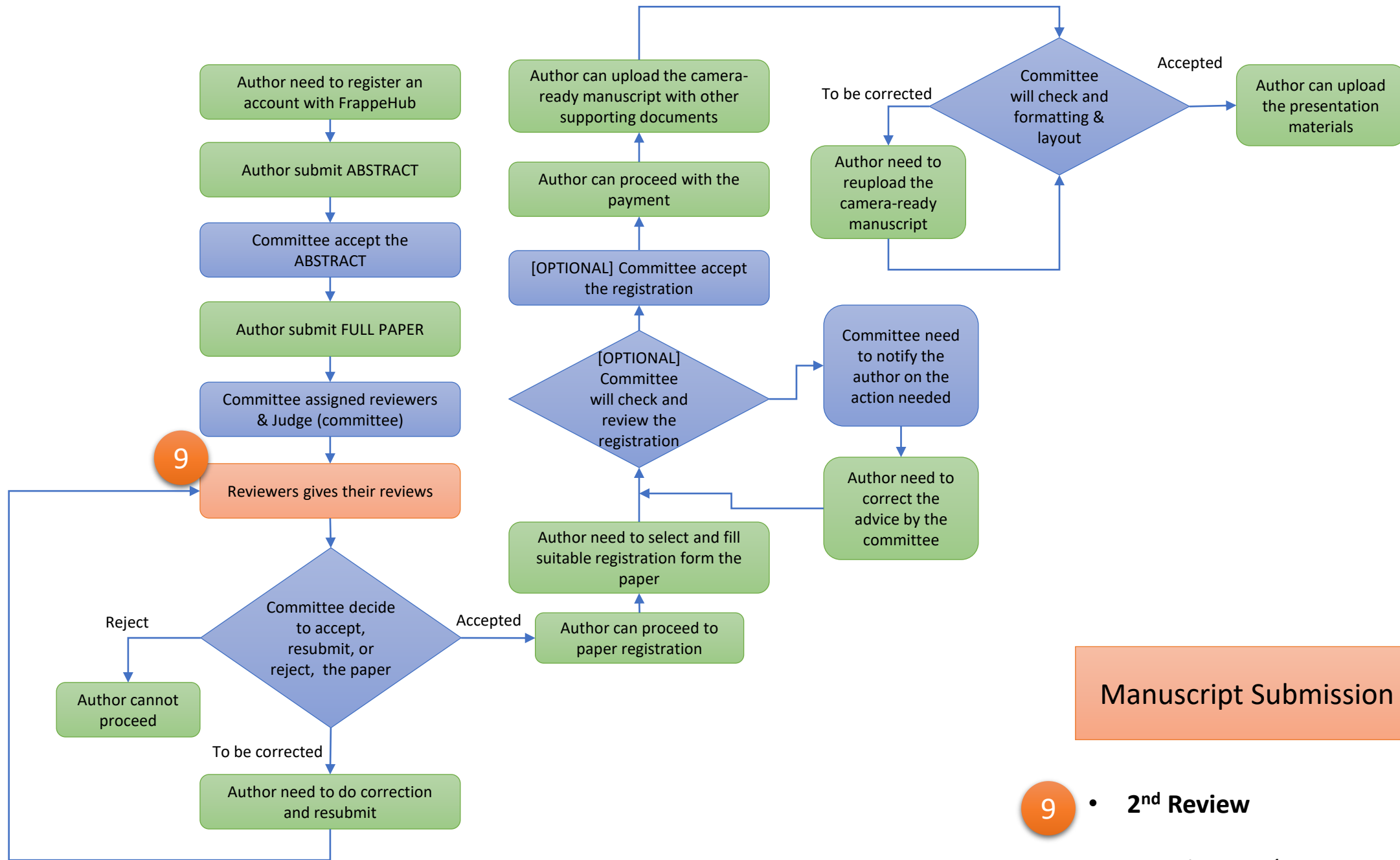
• **Compile reviewers' comments and decide whether to reject/to be resubmit/ accept the paper**

• Judge needs to check the resubmission. Compile reviewers' comments and choose to **Accept/Reject**

• Review & accept the paper registration

• Editor (TPC) check the formatting



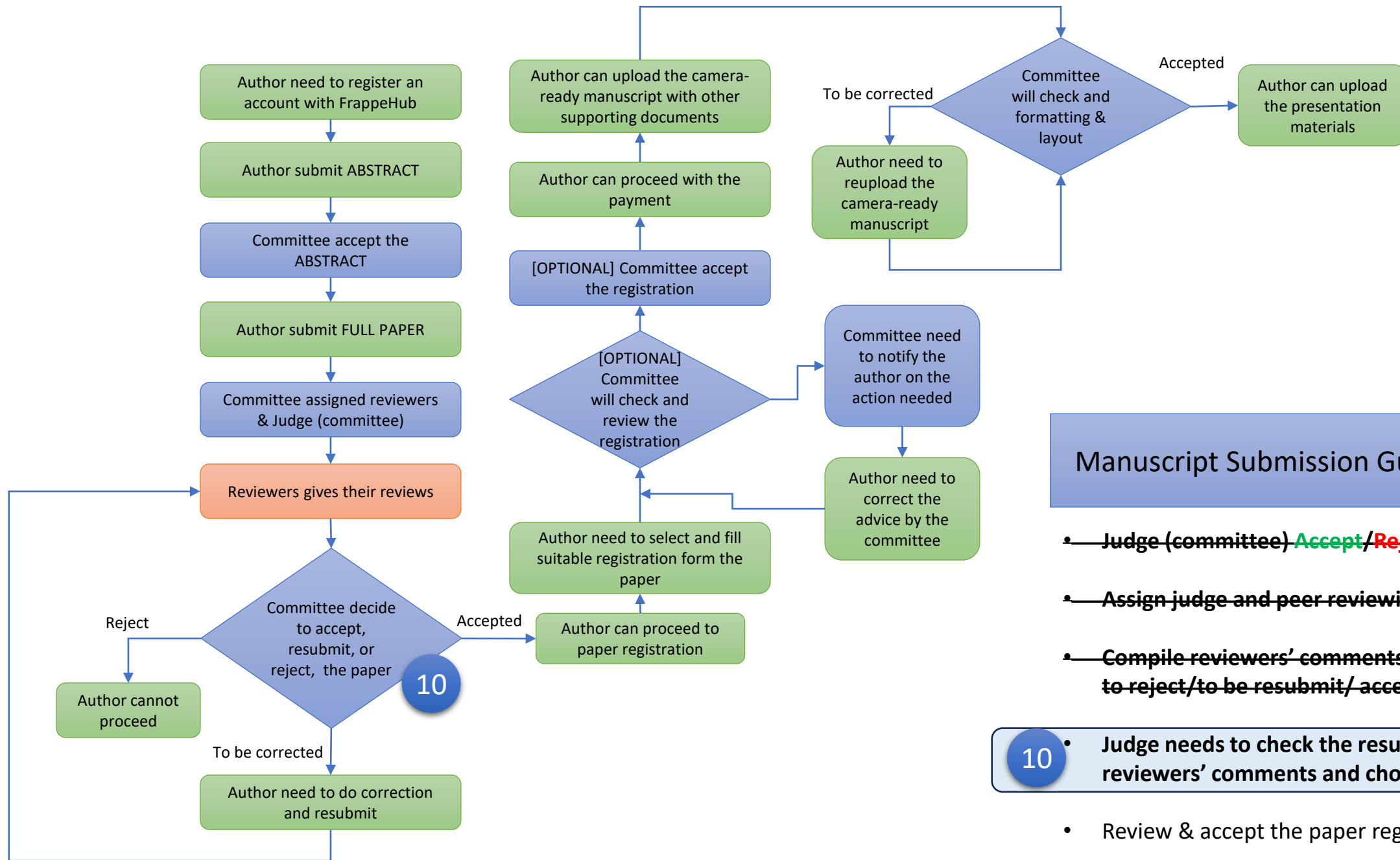


Manuscript Submission Guidelines:

9

• 2nd Review

(Accept/ to be corrected/ reject)



Manuscript Submission Guidelines:

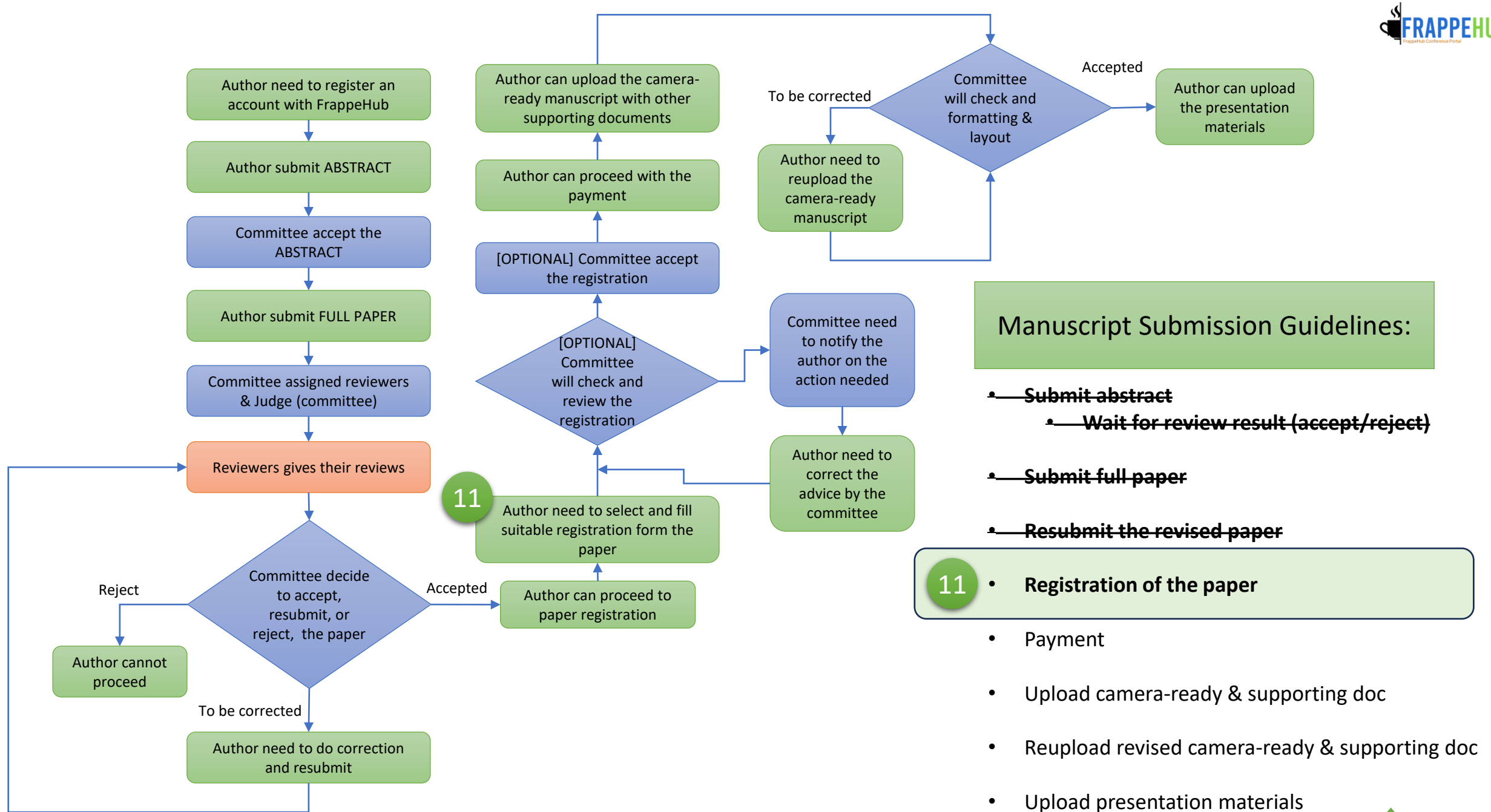
- ~~Judge (committee)~~ **Accept/Reject Abstract**
- ~~Assign judge and peer reviewing~~
- ~~Compile reviewers' comments and decide whether to reject/to be resubmit/ accept the paper~~

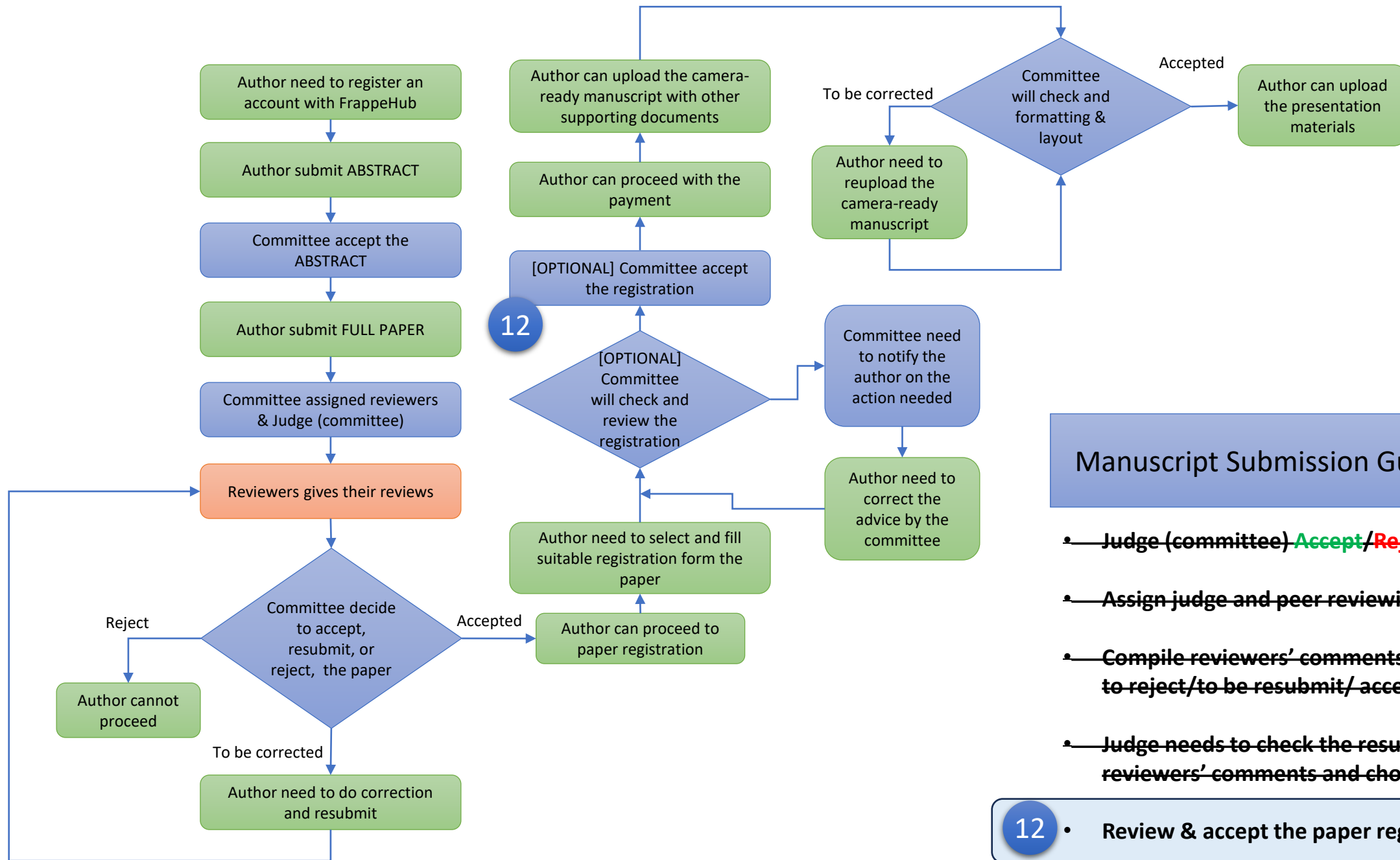
10

- Judge needs to check the resubmission. Compile reviewers' comments and choose to **Accept/Reject**

- Review & accept the paper registration

- Editor (TPC) check the formatting



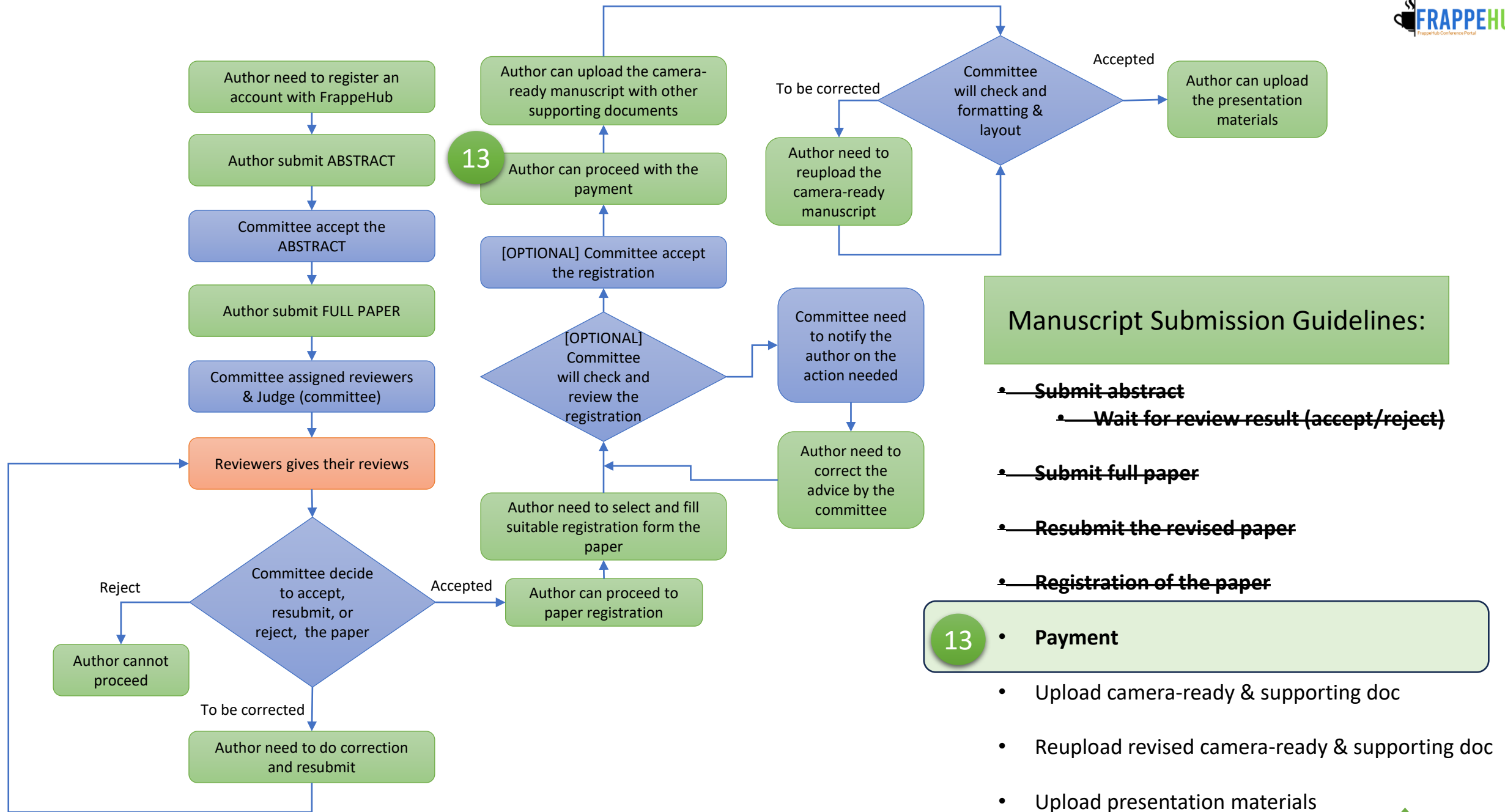


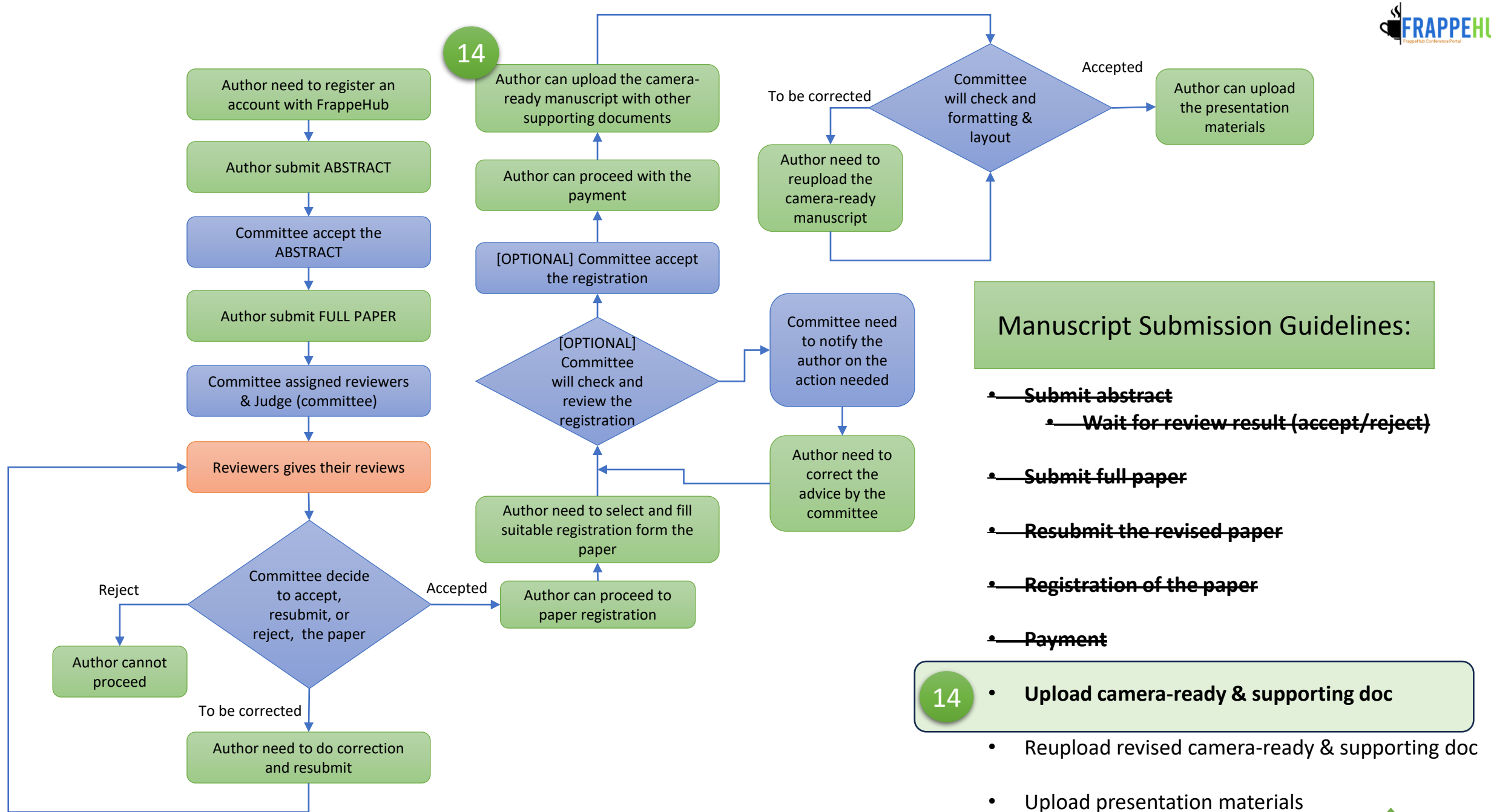
Manuscript Submission Guidelines:

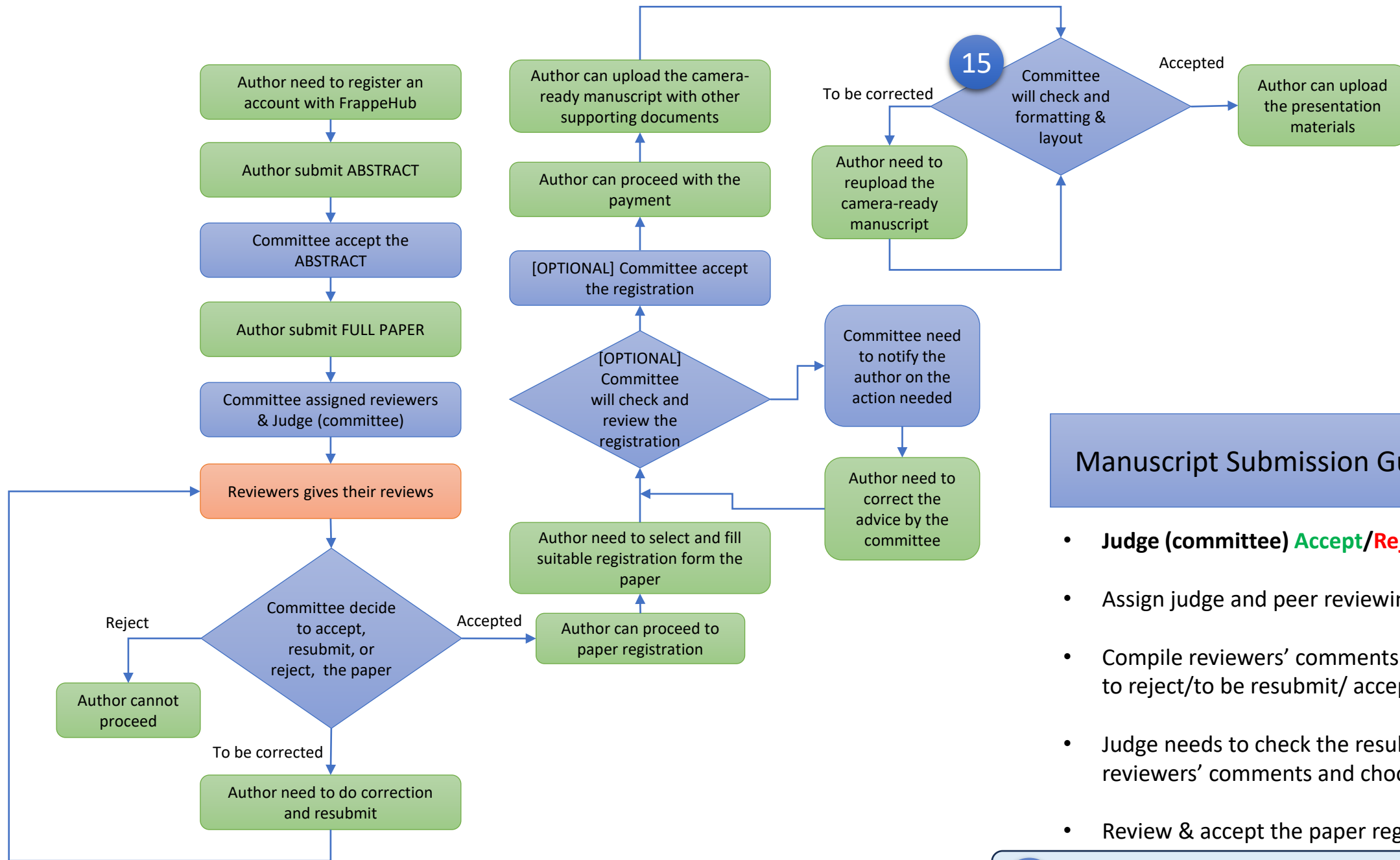
- ~~Judge (committee)~~ **Accept/Reject** Abstract
- ~~Assign judge and peer reviewing~~
- ~~Compile reviewers' comments and decide whether to reject/to be resubmit/ accept the paper~~
- ~~Judge needs to check the resubmission. Compile reviewers' comments and choose to~~ **Accept/Reject**

12 • Review & accept the paper registration

- Editor (TPC) check the formatting

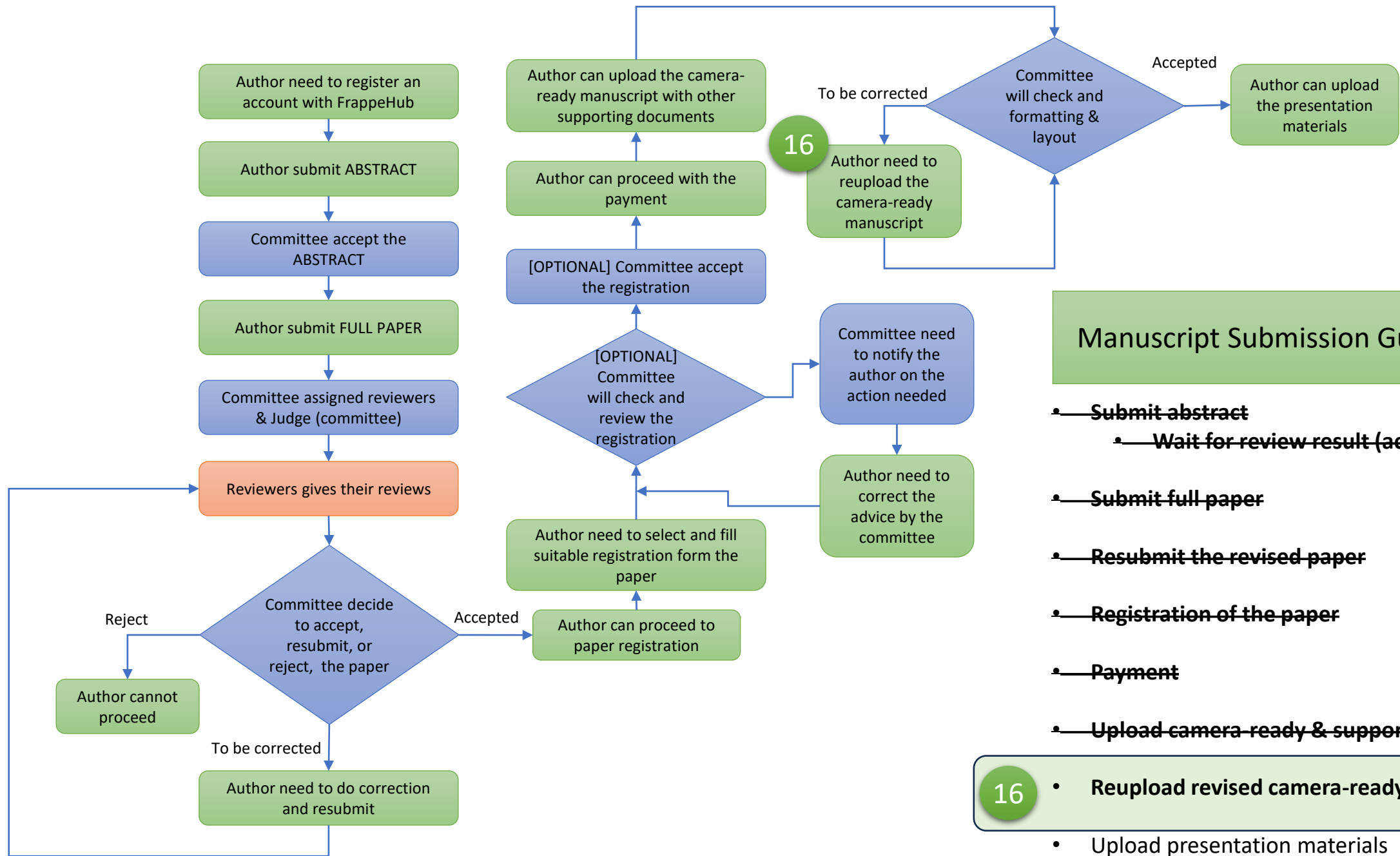






Manuscript Submission Guidelines:

- Judge (committee) **Accept/Reject** Abstract
- Assign judge and peer reviewing
- Compile reviewers' comments and decide whether to reject/to be resubmit/ accept the paper
- Judge needs to check the resubmission. Compile reviewers' comments and choose to **Accept/Reject**
- Review & accept the paper registration

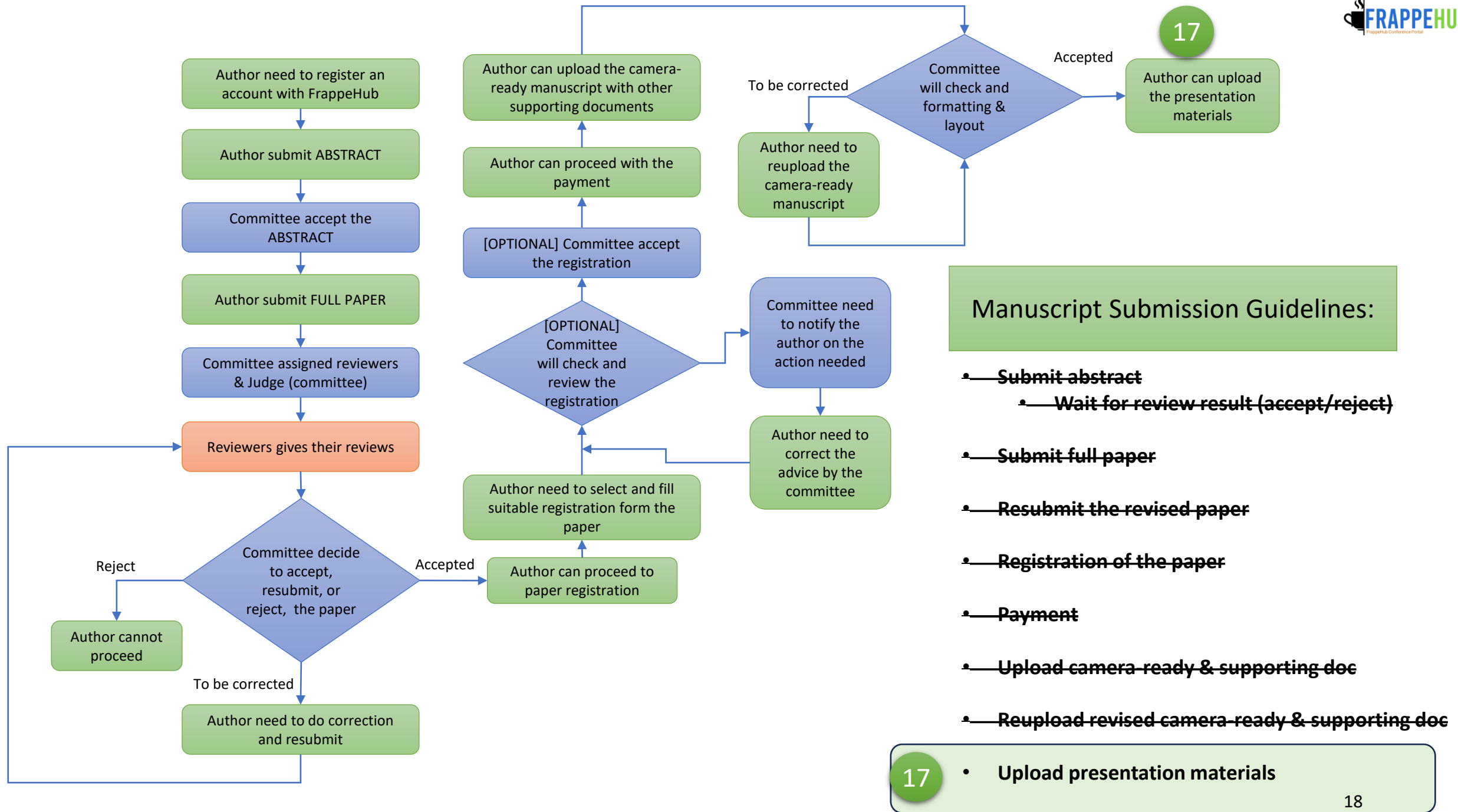


Manuscript Submission Guidelines:

- ~~Submit abstract~~
- ~~Wait for review result (accept/reject)~~
- ~~Submit full paper~~
- ~~Resubmit the revised paper~~
- ~~Registration of the paper~~
- ~~Payment~~
- ~~Upload camera ready & supporting doc~~

16

- Reupload revised camera-ready & supporting doc
- Upload presentation materials



For further inquiries, assistance or suggestions,
please send us an email at

support@frappehub.com